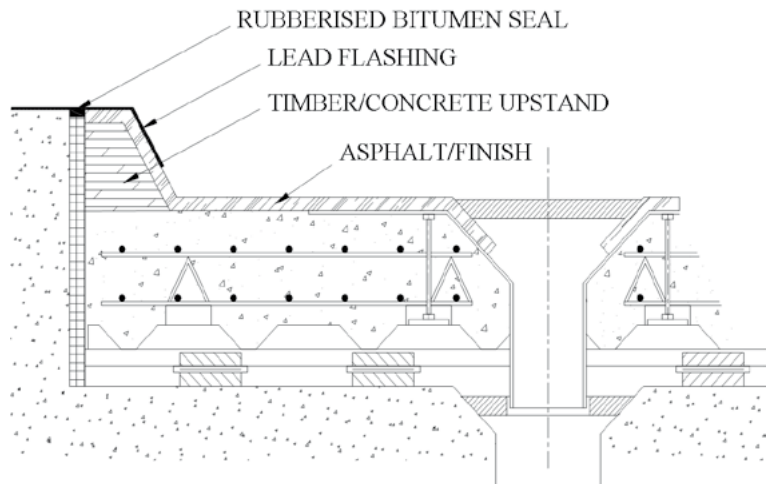




Materials

- The following materials are supplied to permit the simple construction of each floating floor.
- Laminated steel and natural rubber elastomer bearings.
- Galvanised steel channel rails.
- Galvanised steel profile permanent shuttering.
- Peripheral resilient lining material.
- Permanent resilient peripheral sealant to suit application.
- Where required, reinforcing mesh and fixings, thermal/acoustic mineral wool void filler, damp-proof membrane and floor drains can be supplied.

EXTERNAL FLOATING FLOOR PERIPHERY



Special Purpose Systems

Alternative materials and forms of construction are available for use in specific applications. For more advice or information please contact our Engineering Department.

Penetrations

Care is to be taken in providing penetrations through the floating floor for such things as drains, pipes, electric conduits, so as to avoid acoustic bridges. Typical penetration details are shown below.

